

Windows[®] XP / 7 / 8
Printer Driver

OPERATION MANUAL

MIMAKI ENGINEERING CO., LTD.

URL:<http://eng.mimaki.co.jp/>

Table of Contents

| | |
|--|----------|
| Foreword | 4 |
| CAUTION | 4 |
| Before using the printer driver, be sure to read Read me | 4 |
| Symbols | 5 |
| Supported Plotter | 5 |
| System and Software | 5 |
| Check the setting on the plotter side | 5 |
| | |
| Printer Driver Installation | 6 |
| | |
| Settings of the Printer Driver | 8 |
| CG Series Setting the “Printing Preferences” | 9 |
| CG-60st Setting the “Printing Preferences” | 16 |
| CF Series Setting the “Printing Preferences” | 22 |
| Set the output port | 27 |

Foreword

Congratulations on your purchase of Printer Driver.

CAUTION

- This document has been created based on the specification as of February 2015.
- Names in this document are trademarks or registered trademarks of each company.
- Description contained in this Operation Manual are subject to change without notice for improvement.
- Do not copy this software to any other disk for the purpose of other than making a backup disk or load it in memory for the purpose of other than execution.
- Except for the damages prescribed in Warranty Notes of MIMAKI Engineering Co., Ltd. assumes no responsibility for effects (including loss of income, indirect damages, special damages, or other financial damages) resulting from the use or non-use of the product. This also applies to the case when MIMAKI Engineering is notified of the possibility of damages. For example, MIMAKI Engineering Co., Ltd. assumes no responsibility for damages of media (work) caused by using this product and indirect damages caused by a product created using the media.
- For more information of this product, contact a distributor in your district or our office.

Before using the printer driver, be sure to read Read me

Before using the printer driver, read ReadmeCGCFE.txt attached to the installer of the Windows printer driver. In ReadmeCGCFE.txt, notes related to the printer driver are described.



Windows XP, Windows 7, Windows 8 and Windows 8.1 are trademarks of Microsoft Corporation and other countries.

All brand names and product names are trademarks or registered trademarks of their respective companies.

©2015 MIMAKI ENGINEERING CO., LTD. All rights reserved.

Symbols

Notes and useful information are described with the mark below.

| Symbols | Meaning |
|---|---|
|  | Important notes in use of printer driver are given with this symbol. Understand the notes thoroughly to operate the machine properly. |
|  | Useful information is given with this symbol. Refer to the information to operate the machine properly. |

Supported Plotter

This printer driver supports the plotter below manufactured by Mimaki Engineering Co., Ltd. This manual uses the “CG-SRIII Series” as an example for the installation procedure (P.6) and the procedure for setting the output port (P.27). Replace it with the model you’re using.

- CG-FX Series
- CG-FXII Series
- CG-60st
- CG-60SR
- CG-SRII Series
- CG-SRIII Series
- CF2 Series
- CFL-605RT

System and Software

The following conditions are required to use Printer Driver.

This document explains the installation/set-up procedure using Windows 8 as an example.

| | |
|------------|---|
| OS | Microsoft Windows XPSP3 (32bit only), Windows 7 (32bit/64bit), Windows 8 (32bit/64bit), Windows 8.1 (32bit/64bit) |
| CPU | IBM PC or compatible mounting Pentium processor or compatible CPU. |

Check the setting on the plotter side

First, check the setting of the plotter.



- If each setting value of the plotter is different from the one in the table below, you cannot output drawing normally.

| Function | Setting Value |
|----------------------------------|--|
| Connecting conditions of RS-232C | Data Length : 8bits |
| Origin | Lower left |
| Setting of Pen No. assign | Do not change it from the default. ^{*1} |

*1. When you changed the setting, perform “Initializing the Settings” in the Chapter 3 of the user’s manual to initialize the setting contents to the default. (However, all setting contents will be initialized to the default.)

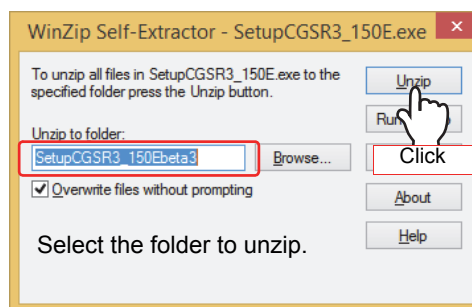
Printer Driver Installation

1 Open the product lineup page on Mimaki Engineering's homepage and download the printer driver for the model you're using from the download site.

2 Double-click  .

3 Select the folder to unzip the installer, and click **Unzip**.

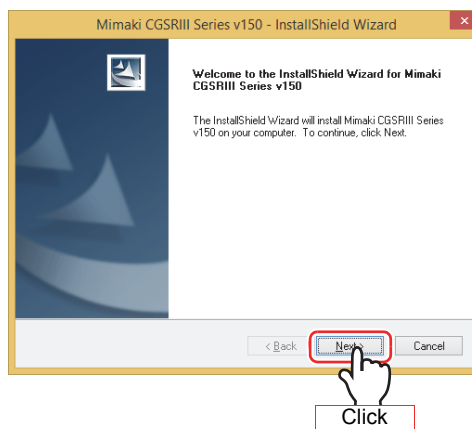
- The [Setup"model name"] folder is created in the selected folder.



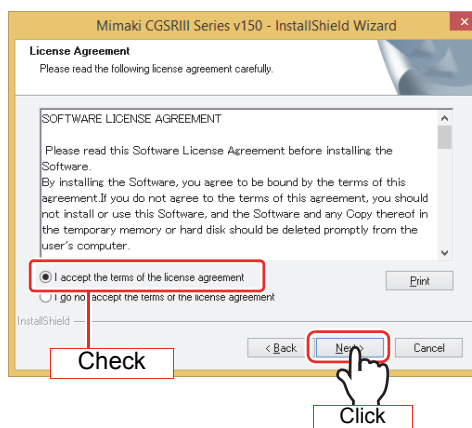
4 Open the folder you selected in step 3, and double-click  .

- Install shield wizard will start.

5 Click **Next** .

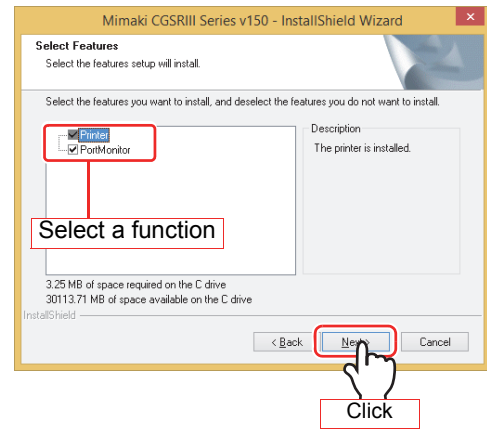


6 Check [I accept the terms of the license agreement] and click **Next** .



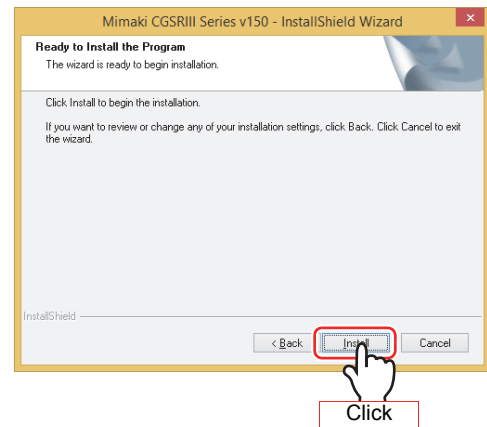
7 Select a function to install, and click **Next**.

- If you do not install PortMonitor, uncheck the box.
- You cannot install when only PortMonitor is selected.

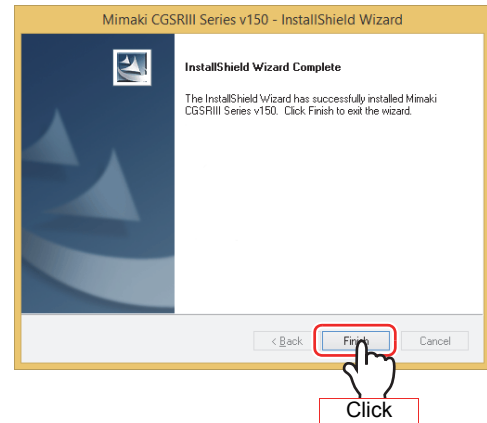


8 Click **Install**.

- Start installation.



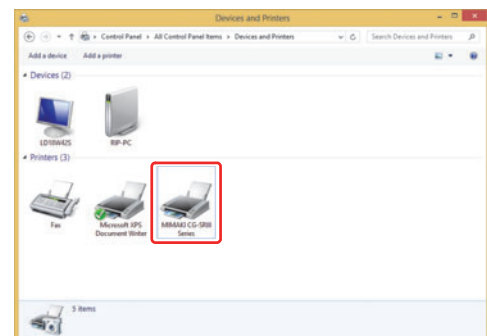
9 Click **Finish**.



10 When the installation is completed, the Printer is added to “Devices and Printers”.



- The name for “Device and Printers” varies depending on the OS.
Windows XP: Printer and Faxes
Windows 7/8: Device and Printers



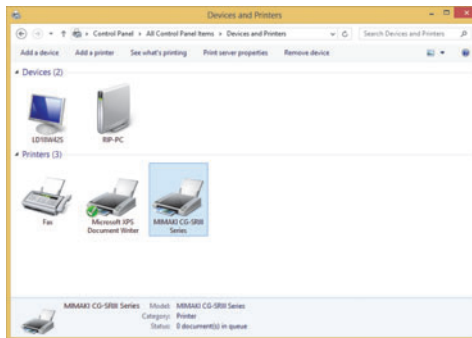
Settings of the Printer Driver

Set the printer driver depending on your usage.

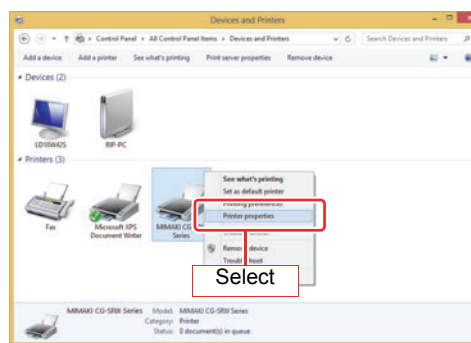
1 Open “Devices and Printers”, and select the plotter to be set.



- The name for “Device and Printers” varies depending on the OS.
Windows XP: Printer and Faxes
Windows 7/8: Device and Printers

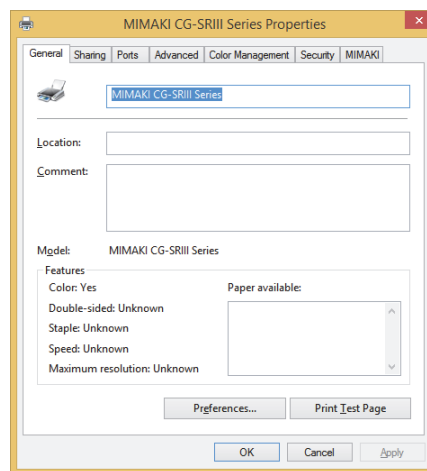


2 Click the right button of the mouse, and select “Printer properties”.



3 Properties are displayed.

- Properties have the setting tabs of the table below. Click each tab to perform/ check the setting.



| Setting tab | Outline |
|-------------------------|--|
| General | General information of the printer driver is displayed. When you click Preferences... , you can perform various setting related to printing (“Form setting_”, “Output setting_” and “Etc.”). (from P.9) |
| Sharing | Sets printer sharing. |
| Ports | Sets the output port. (P.27) |
| Advanced | Performs detailed setting related to the driver. |
| Color Management | Manages colors. (Setting is not required.) |
| Security | Performs setting related to the security. |
| MIMAKI | Displays the version information of the printer driver etc. When you click the URL, MIMAKI’s web page is displayed. |

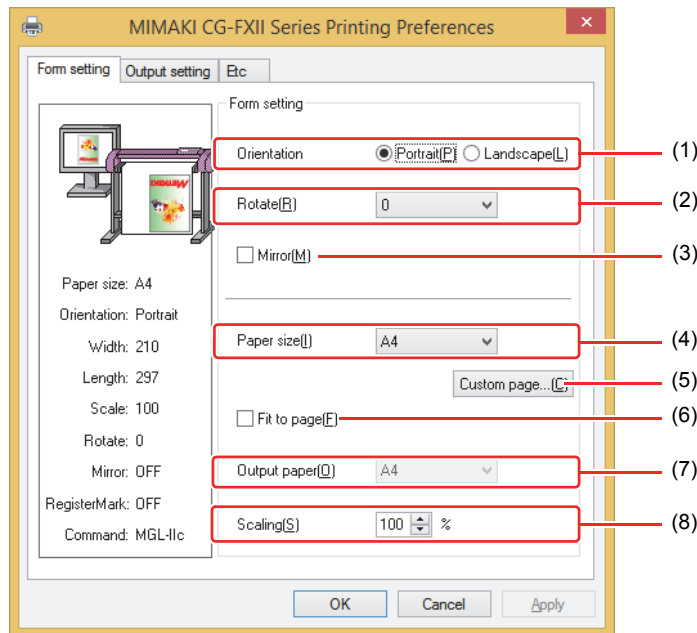
CG Series Setting the “Printing Preferences”

Here, the explanation is made with respect to the driver of CG Series(CG-FX Series, CG-FXII Series, SG-60SR, CG-SRII Series and SG-SRIII Series).

■ Form setting

1 Referring to P.8, display the “General” tab and click **Preferences...** .

- Display the “Form setting” tab of Printing Preferences.
- Depending on your usage, perform each setting.



(1) Orientation

Set whether to cutting the image vertically (Portrait) or horizontally (Landscape) in the paper.

(2) Rotate

Set whether to use the form vertically or horizontally.

Setting value.....0,90,180,270 (degree)



- In some applications, output obtained by rotating the paper horizontally and the image displayed by preview are in reverse direction.

(3) Mirror

Flips horizontally and cuts.

(4) Paper size

Select the paper size attached to the printer or the paper size to be recognized by the application from the list box.

(5) Custom page

Enables to set up to 4 kinds of user size form.

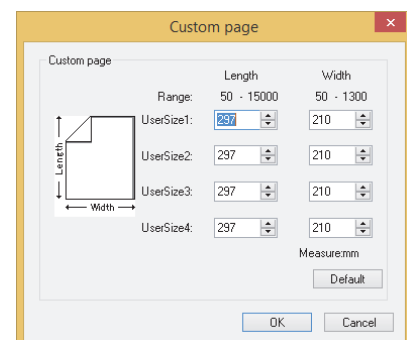
Length 50 to 1500mm(Maximum value differs depending on the machine model.)

Width 50mm - (Maximum value differs depending on the machine model.)

When you click **Default**, the custom page you set returns to the default.

(6) Fit to page

Cuts the image scaled to the paper size.



(7) Output paper

Selection of the paper size is activated when "Fit to page" is checked.

(8) Scaling

Scaling is activated when "Fit to page" is unchecked.

If scaling up the paper size which is larger than the paper size, the image is cut in the range of the paper size only.

■ Output setting

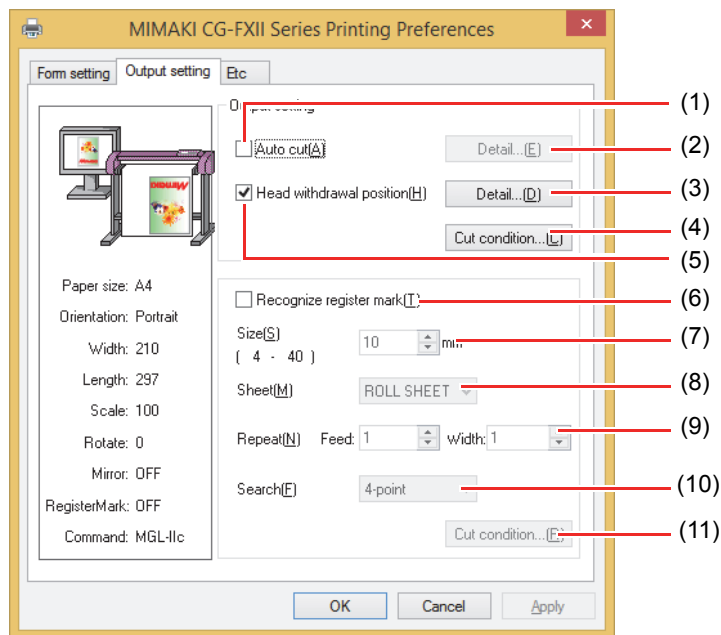
1 Referring to P.8, display the “General” tab and click **Preferences...** .



- In case MGL-IIc is selected for command, it is able to configure the auto cut, Cut condition setting, and register mark setting.

2 Click “Output setting” tab.

- Depending on your usage, perform each setting.

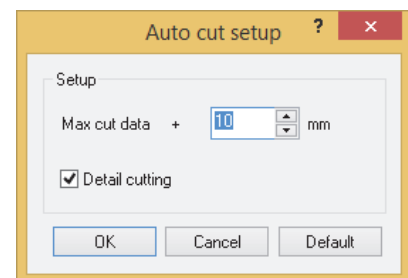


(1) Auto cut

When this is checked, sheet cut is performed when cutting is completed. This is not indicated in the case of CG-60SR/SRII series and SRIII series.

(2) Auto cut setup

Select the position to cut the sheet. The setting range is 0 - 100mm. When “Detail cutting” is checked, the sheet is cut for every line.



(3) Head withdraw position detail

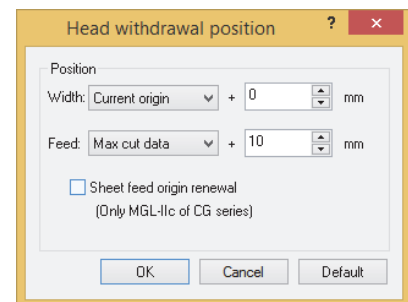
Detail button is activated when “Head withdrawal position” is checked.

Width Head withdraw position against the moving direction of the head can be set. The setting can be made within the range of 0 - 100 mm from “current origin” or “Max. cut data.”

Feed Head withdraw position against the feeding direction can be set. The setting can be made within the range of 0 - 100 mm from “current origin” or “Max. cut data”.

Sheet feed origin renewal

When this box is checked, the Head withdraw position is renewed to the origin. This is effective only with MGL-IIc command.



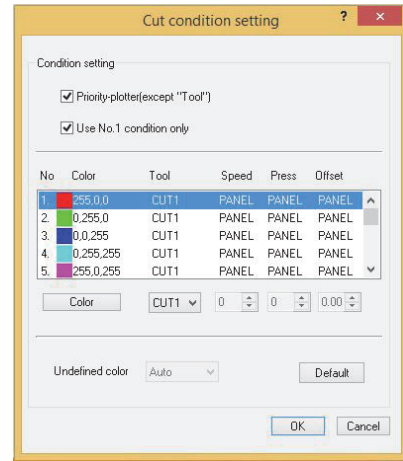
- When “Sheet feed origin renewal” is checked, head withdraw position against the moving direction of the head cannot be set.

(4) Cut condition setting

Priority-plotter(except "Tool") :

ON.....Cuts in accordance with the tool conditions of the plotter.

OFF.....Cuts in accordance with the tool conditions displayed on the list.



- When "Priority-plotter(except "Tool")" is put on, the setting value on the list cannot be changed.

Use No.1 condition only :

ON.....Cut all color in accordance with the tool condition No.1 specified in the list.

OFF.....It is possible to cut changing pen No. and tool conditions by the color.



- If you put on "Only No.1 condition is used," it is not possible to change the setting value of "Undefine color."

Color.....If there is no color to select in the list, click **Color** to change the color needed.



- When the RGB value is not known, refer to the RGB value of "View a transit dialog."

TOOL..... Setting of the plotter tool(CUT1 - CUT5, PEN, HALF, PIN) is made for colors.

Speed Set the cutting speed (1 to 120cm/s). When "0" is selected, the setting is switched to the plotter side.

Press Set the pressure to cut (1 to 500g). When "0" is selected, the setting is switched to the plotter side.

Offset..... Set the offset value for cutting (0.01 to 2.50mm). When "0" is selected, the setting is switched to the plotter side.

Undefined Color :

Pass Does not cut the indicated color.

Auto..... Cuts with the tool condition right before cut.

1-40..... Cuts with the specified tool condition of the list No.



- If the specified value is out of the limit value which can be specified on the plotter, it cuts with the limit value.

(5) Head withdrawal position

When this is checked, the head is withdrawn to the designated position when cutting is completed.

(6) Recognize register mark

Be sure to check this if you are cutting register mark.



- It is able to recognize the register mark which printed with JV series printer driver. (Not able to recognize the one created with FineCut)
- When using the media by cutting after printed, be sure that all the register mark is positioned within the effective cut area.

(7) Size

Set the size of the register mark to be printed. The setting range is 4 to 40mm.

(8) Sheet

Selects whether the sheet is roll sheet or leaf sheet.

(9) Repeat

Set the number of copy of the data with the register mark. The setting differs depending on the sheet (ROLL/LEAF).

ROLL SHEET... Sets the number of copies for feed direction(1 to 9999) and scan direction(1 to 32) of the sheet.

LEAF SHEET Sets within the range of 1 to 9999.

(10) Search

Sets the detecting position(1point, 2point(feed), 2point(scan), 3point, 4point,) of the register mark.

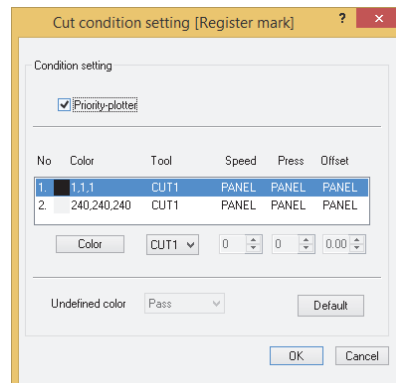
(11) Cut condition

Sets the condition for cutting the register mark.

Priority-plotter :

ON.....Cuts under the tool conditions of the plotter.

OFF.....Cuts under the tool conditions displayed on the list.



- When “Priority-plotter” is put on, setting value of the list cannot be changed.

Color..... If there is no color to select in the list, click **Color** to change the color needed.

TOOL..... Setting of the plotter tool(CUT1 - CUT5, PEN, HALF, PIN) is made for colors.

Speed Set the cutting speed (1 to 120cm/s). When “0” is selected, the setting is switched to the plotter side.

Press Set the pressure to cut (1 to 500g). When “0” is selected, the setting is switched to the plotter side.

Offset..... Set the offset value for cutting (0.01 to 2.50mm). When “0” is selected, the setting is switched to the plotter side.

Undefined color:

In the case of register mark data cutting, the color other than the set color is not output.



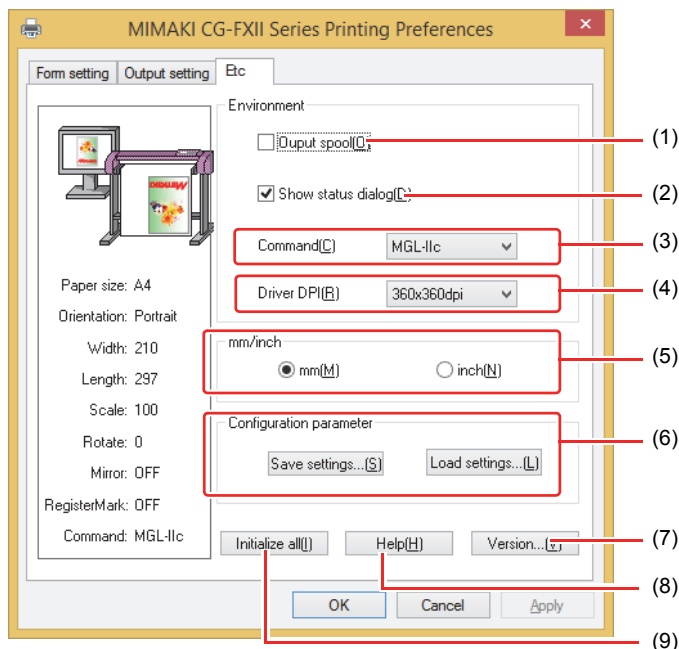
- If the specified value is out of the limit value which can be specified on the plotter, it cuts with the limit value.

■ Etc

1 Referring to P.8, display the “General” tab and click **Preferences...** .

2 Click “Etc” tab.

- Depending on your usage, perform each setting.



(1) Output spool

When the processing by the driver is slow, you may output at a high speed after spooling the output command on the hard disk.



- The spool folder is set using the following procedure.
Windows XP: [Printers and Faxes] - [File] - [Server Properties] - [Advanced]
Windows 7/8: [Select either printer icon in Device and Printers] - Click [Print server properties] - [Print Server Properties] dialog box - [Advanced] tab

(2) Show status dialog

Displays the progress of the driver output process.

(3) Command

Make the setting same as “Command changeover” of plotter.

(4) Driver DPI

Sets the resolution of the driver.



- When the cut quality is coarse or when small letters are cut, select 720 x 720 dpi.

(5) mm/inch

Changes the unit of the length (mm/inch).

(6) Configuration parameter

Save settings..... Saves the specified setting values of the driver.

Load settings..... Reads the setting file saved and changes the driver setting values.

(7) Version

Displays version information of the printer driver.

(8) Help

Displays Help.

(9) Initialize all

Initializes all the setting values.



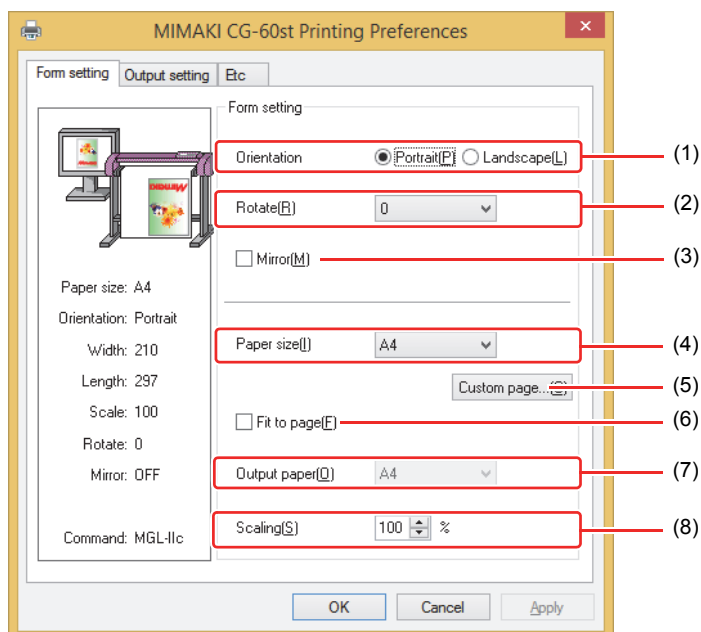
CG-60st Setting the “Printing Preferences”

Here, the explanation is made with respect to the driver of CG-60st.

■ Form setting

1 Referring to P.8, display the “General” tab and click Preferences....

- Display the “Form setting” tab of Printing Preferences.
- Depending on your usage, perform each setting.



(1) Orientation

Set whether to cutting the image vertically (Portrait) or horizontally (Landscape) in the paper.

(2) Rotate

Set whether to use the form vertically or horizontally.
Setting value.....0,90,180,270 (degree)



- In some applications, output obtained by rotating the paper horizontally and the image displayed by preview are in reverse direction.

(3) Mirror

Flips horizontally and cuts.

(4) Paper size

Select the paper size attached to the printer or the paper size to be recognized by the application from the list box.

(5) Custom page

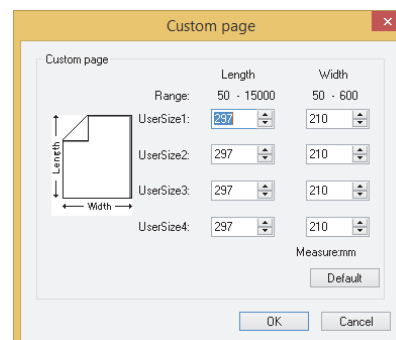
Enables to set up to 4 kinds of user size form.
Length50 to 15000mm(Maximum value differs depending on the machine model.)

Width50mm to 600mm(Maximum value differs depending on the machine model.)

When you click Default, the custom page you set returns to the default.

(6) Fit to page

Cuts the image scaled to the paper size.



(7) Output paper

Selection of the paper size is activated when "Fit to page" is checked.

(8) Scaling

Scaling is activated when "Fit to page" is unchecked.

If scaling up the paper size which is larger than the paper size, the image is cut in the range of the paper size only.

■ Output setting

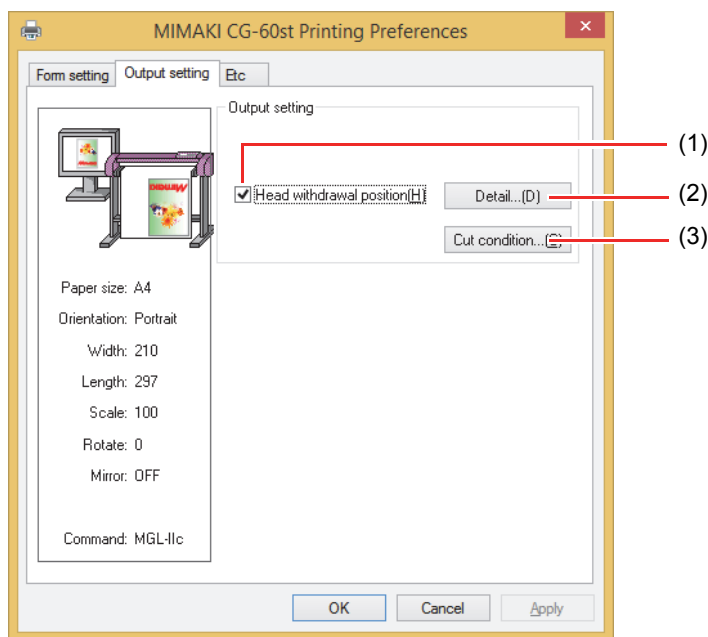
1 Referring to P.8, display the “General” tab and click **Preferences...** .



- In case MGL-IIc is selected for command, it is able to configure the auto cut, Cut condition setting, and register mark setting.

2 Click “Output setting” tab.

- Depending on your usage, perform each setting.



(1) Head withdrawal position

When this is checked, the head is withdrawn to the designated position when cutting is completed.

(2) Head withdraw position detail

Detail button is activated when “Head withdrawal position” is checked.

Width Head withdraw position against the moving direction of the head can be set. The setting can be made within the range of 0 - 100 mm from “current origin” or “Max. cut data.”

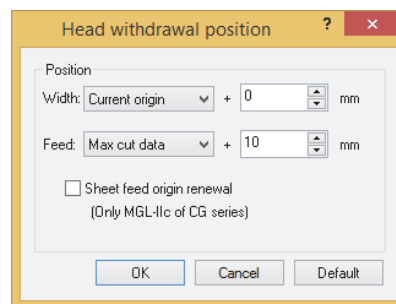
Feed Head withdraw position against the feeding direction can be set. The setting can be made within the range of 0 - 100 mm from “current origin” or “Max. cut data”.

Sheet feed origin renewal

When this box is checked, the Head withdraw position is renewed to the origin. This is effective only with MGL-IIc command.



- When “Sheet feed origin renewal” is checked, head withdraw position against the moving direction of the head cannot be set.

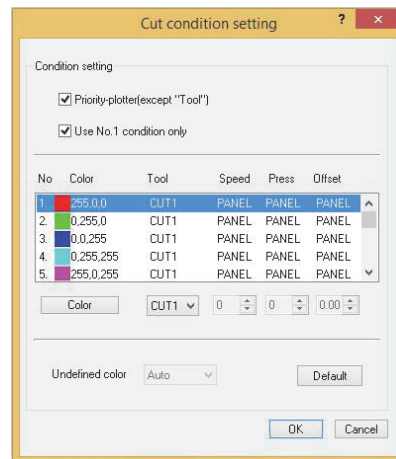


(3) Cut condition setting

Priority-plotter(except "Tool") :

ON.....Cuts in accordance with the tool conditions of the plotter.

OFF.....Cuts in accordance with the tool conditions displayed on the list.



- When "Priority-plotter(except "Tool")" is put on, the setting value on the list cannot be changed.

Use No.1 condition only :

ON.....Cut all color in accordance with the tool condition No.1 specified in the list.

OFF.....It is possible to cut changing pen No. and tool conditions by the color.



- If you put on "Only No.1 condition is used," it is not possible to change the setting value of "Undefine color."

Color.....If there is no color to select in the list, click **Color** to change the color needed.



- When the RGB value is not known, refer to the RGB value of "View a transit dialog."

TOOL..... Setting of the plotter tool(CUT1 - CUT5, PEN, HALF, PIN) is made for colors.

Speed Set the cutting speed (1 to 120cm/s). When "0" is selected, the setting is switched to the plotter side.

Press Set the pressure to cut (1 to 500g). When "0" is selected, the setting is switched to the plotter side.

Offset..... Set the offset value for cutting (0.01 to 2.50mm). When "0" is selected, the setting is switched to the plotter side.

Undefined Color :

Pass Does not cut the indicated color.

Auto..... Cuts with the tool condition right before cut.

1-40..... Cuts with the specified tool condition of the list No.



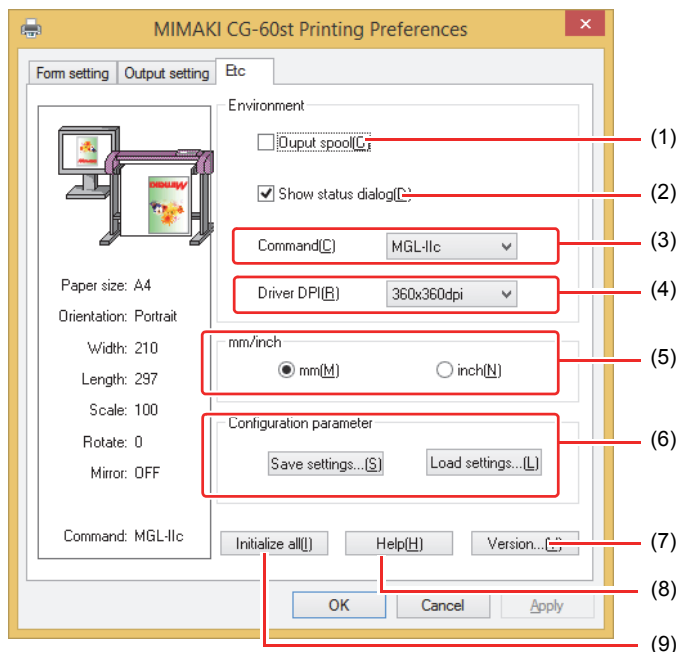
- If the specified value is out of the limit value which can be specified on the plotter, it cuts with the limit value.

■ Etc

1 Referring to P.8, display the “General” tab and click **Preferences...** .

2 Click “Etc” tab.

- Depending on your usage, perform each setting.



(1) Output spool

When the processing by the driver is slow, you may output at a high speed after spooling the output command on the hard disk.



- The spool folder is set using the following procedure.
Windows XP: [Printers and Faxes] - [File] - [Server Properties] - [Advanced]
Windows 7/8: [Select either printer icon in Device and Printers] - Click [Print server properties] - [Print Server Properties] dialog box - [Advanced] tab

(2) Show status dialog

Displays the progress of the driver output process.

(3) Command

Make the setting same as “Command changeover” of plotter.

(4) Driver DPI

Sets the resolution of the driver.



- When the cut quality is coarse or when small letters are cut, select 720 x 720 dpi.

(5) mm/inch

Changes the unit of the length (mm/inch).

(6) Configuration parameter

Save settings.....Saves the specified setting values of the driver.

Load settings.....Reads the setting file saved and changes the driver setting values.

(7) Version

Displays version information of the printer driver.

(8) Help

Displays Help.

(9) Initialize all

Initializes all the setting values.



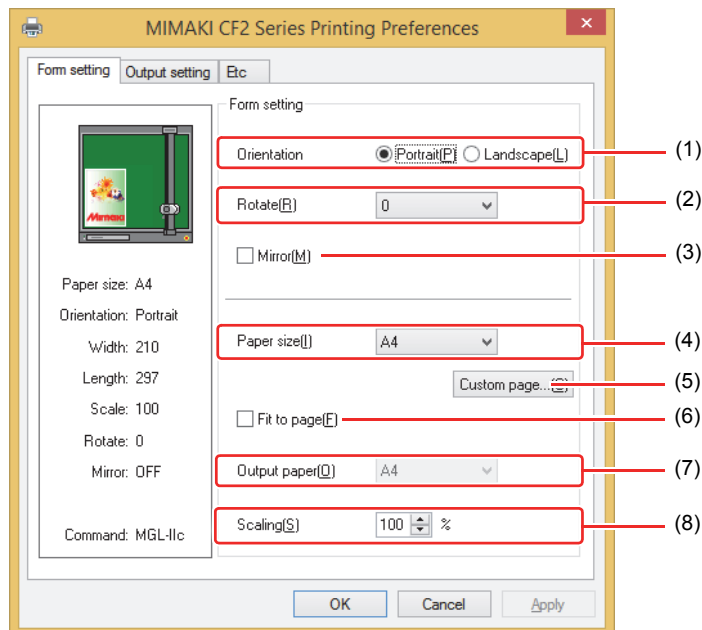
CF Series Setting the "Printing Preferences"

Here, the explanation is made with respect to the driver of CF Series.

■ Form setting

1 Referring to P.8, display the "General" tab and click Preferences....

- Display the "Form setting" tab of Printing Preferences.
- Depending on your usage, perform each setting.
- The home position and output direction vary by model.



(1) Orientation

Set whether to cutting the image vertically (Portrait) or horizontally (Landscape) in the paper.

(2) Rotate

Set whether to use the form vertically or horizontally.

Setting value.....0,90,180,270 (degree)



- In some applications, output obtained by rotating the paper horizontally and the image displayed by preview are in reverse direction.

(3) Mirror

Flips horizontally and cuts.

(4) Paper size

Select the paper size attached to the printer or the paper size to be recognized by the application from the list box.

(5) Custom page

Enables to set up to 4 kinds of user size form.

Length 50 to 1200mm

Width 50mm to 1800mm

When you click Default, the custom page you set returns to the default.

(6) Fit to page

Cuts the image scaled to the paper size.

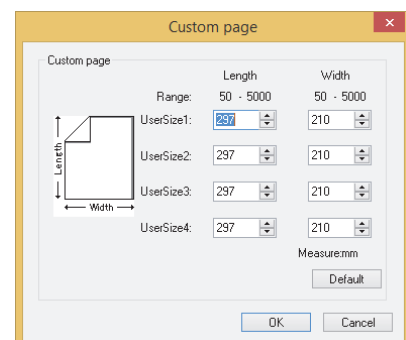
(7) Output paper

Selection of the paper size is activated when "Fit to page" is checked.

(8) Scaling

Scaling is activated when "Fit to page" is unchecked.

If scaling up the paper size which is larger than the paper size, the image is cut in the range of the paper size only.



■ Output setting

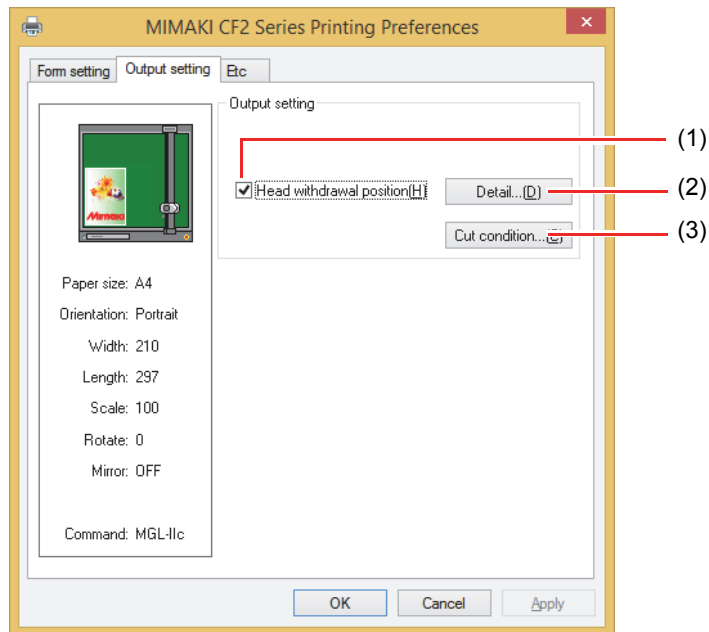
1 Referring to P.8, display the “General” tab and click Preferences... .



- In case MGL-IIc is selected for command, it is able to configure the auto cut, Cut condition setting, and register mark setting.

2 Click “Output setting” tab.

- Depending on your usage, perform each setting.



(1) Head withdrawal position

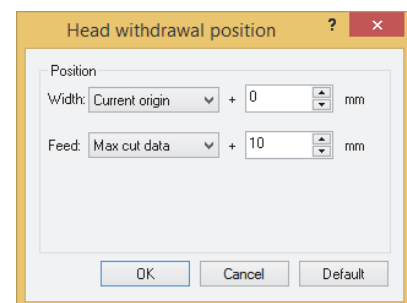
When this is checked, the head is withdrawn to the designated position when cutting is completed.

(2) Head withdraw position detail

Detail button is activated when “Head withdrawal position” is checked.

Width Head withdraw position against the CF X-axis can be set. The setting can be made within the range of 0 - 100 mm from “current origin” or “Max. cut data.”

Feed Head withdraw position against the CF Y-axis can be set. The setting can be made within the range of 0 - 100 mm from “current origin” or “Max. cut data”.

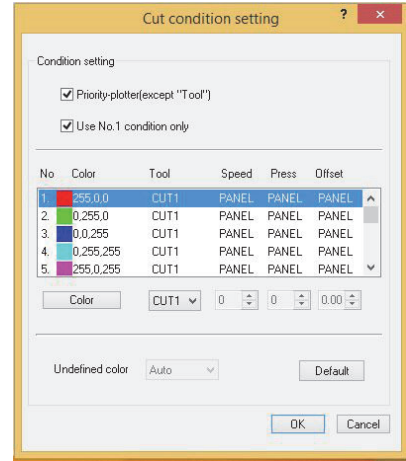


(3) Cut condition setting

Priority-plotter(except "Tool") :

ON.....Cuts in accordance with the tool conditions of the plotter.

OFF.....Cuts in accordance with the tool conditions displayed on the list.



- When "Priority-plotter(except "Tool")" is put on, the setting value on the list cannot be changed.

Use No.1 condition only :

ON.....Cut all color in accordance with the tool condition No.1 specified in the list.

OFF.....It is possible to cut changing pen No. and tool conditions by the color.



- If you put on "Only No.1 condition is used," it is not possible to change the setting value of "Undefine color."

Color.....If there is no color to select in the list, click **Color** to change the color needed.



- When the RGB value is not known, refer to the RGB value of "View a transit dialog."

TOOL..... Setting of the plotter tool(Pen1 - Pen6) is made for colors.



- If set the tool number in the output conditions, check the settings of the tool of plotter side.
- Check the pen number allocation of plotter side, and set of cut condition.
- If use the tool of B unit in the CFL-605RT, ruling roller, reciprocating cutter, tangential cutter can not be used at the same time. In the case of "cut with reciprocating cutter after ruling" or so, output the cut data for each tool.

Speed Set the cutting speed (1 to 50cm/s). When "0" is selected, the setting is switched to the plotter side.

Press Set the pressure to cut (1 to 10000g). When "0" is selected, the setting is switched to the plotter side.

Offset..... Set the offset value for cutting (0.01 to 2.50mm). When "0" is selected, the setting is switched to the plotter side.

Undefined Color :

Pass Does not cut the indicated color.

Auto.....Cuts with the tool condition right before cut.

1-40.....Cuts with the specified tool condition of the list No.



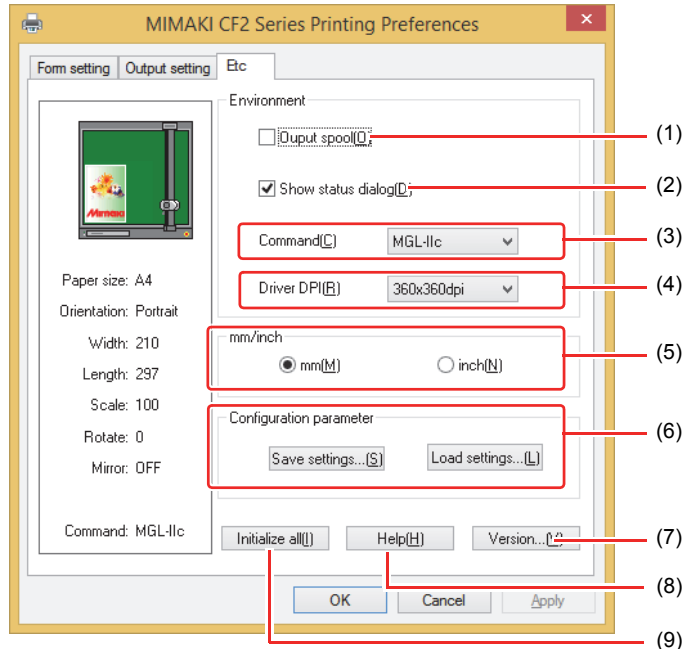
- If the specified value is out of the limit value which can be specified on the plotter, it cuts with the limit value.

■ Etc

1 Referring to P.8, display the “General” tab and click **Preferences...** .

2 Click “Etc” tab.

- Depending on your usage, perform each setting.



(1) Output spool

When the processing by the driver is slow, you may output at a high speed after spooling the output command on the hard disk.



- The spool folder is set using the following procedure.
Windows XP: [Printers and Faxes] - [File] - [Server Properties] - [Advanced]
Windows 7/8: [Select either printer icon in Device and Printers] - Click [Print server properties] - [Print Server Properties] dialog box - [Advanced] tab

(2) Show status dialog

Displays the progress of the driver output process.

(3) Command

Make the setting same as “Command changeover” of plotter.

(4) Driver DPI

Sets the resolution of the driver.



- When the cut quality is coarse or when small letters are cut, select 720 x 720 dpi.

(5) mm/inch

Changes the unit of the length (mm/inch).

(6) Configuration parameter

Save settings..... Saves the specified setting values of the driver.

Load settings..... Reads the setting file saved and changes the driver setting values.

(7) Version

Displays version information of the printer driver.

(8) Help

Displays Help.

(9) Initialize all

Initializes all the setting values.



Set the output port

■ When you connect the PC with the plotter via USB interface cable

1 Install “Mimaki driver” in your PC.

- The “Mimaki driver” is included in the manual CD attached to plotter. Otherwise download the Mimaki driver, check “Driver / Utility” on the download page at Mimaki Engineering (<http://eng.mimaki.co.jp/download/>).

2 Connect your PC with plotter with a USB cable and turn on the power.

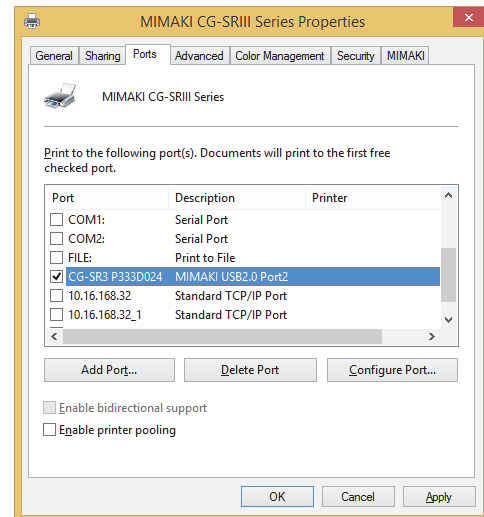
3 Referring to P.8, select the “Ports” tab.

4 Select output port.

- When you connect multiple plotters with the PC, select different ports.

Important!

- When you connect multiple plotters (same device type) with the PC, set different device No. for each plotter in “USB device No. setting” of the plotter. If you set the same device No. to multiple plotters, the ports cannot be displayed.
- With the CG-SRIII Series, the serial number is the device number. Therefore, settings are not necessary.

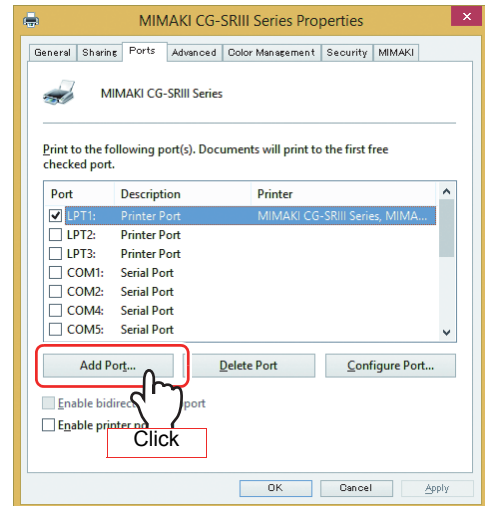


■ When you connect the PC with the plotter via LAN cable

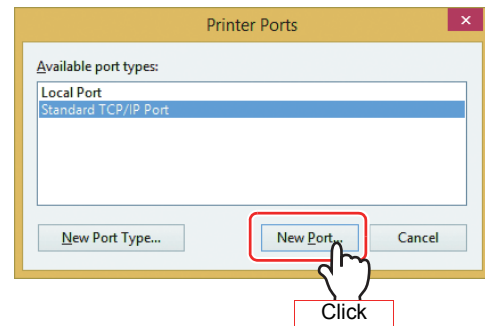
1 Connect your PC with plotter with a LAN cable and turn on the power.

2 Referring to P.8, select the “Ports” tab.

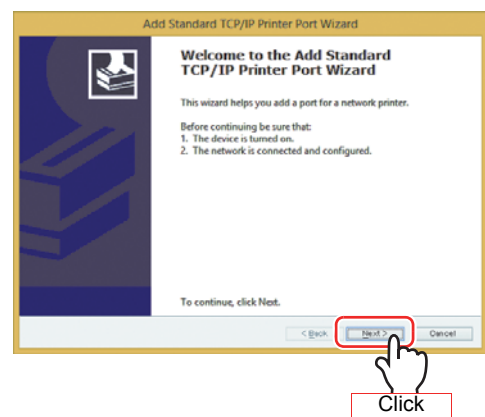
3 Click [Add Port...].



4 Select the “Standard TCP/IP Port” of printer port, and click [New Port...].

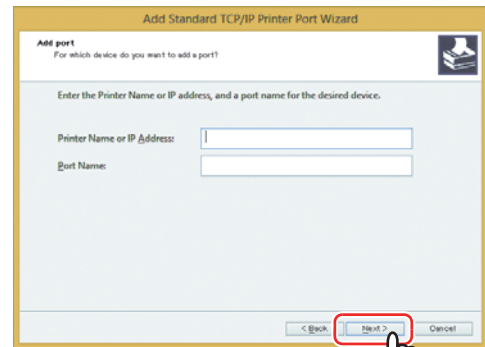


5 Click [Next].



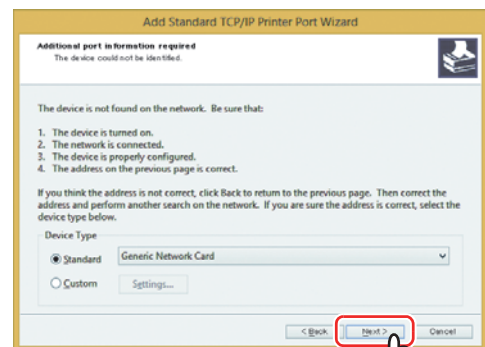
6 Enter the IP address to "Printer Name or IP Address" and click [Next].

- Please refer to the instruction manual of the plotter (Set the network) for IP address.



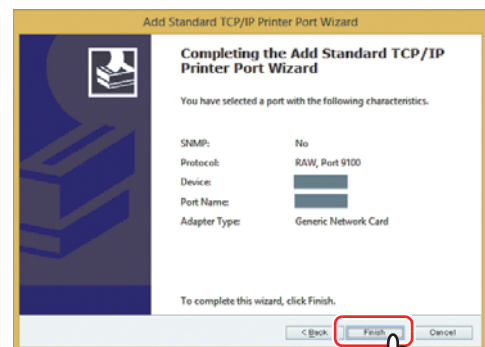
Click

7 Click [Next].



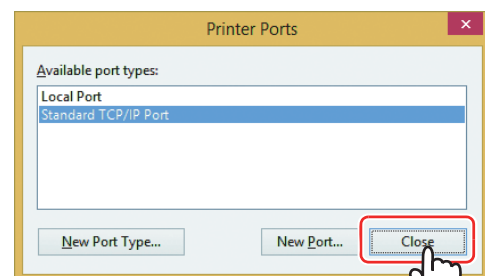
Click

8 Click [Finish].



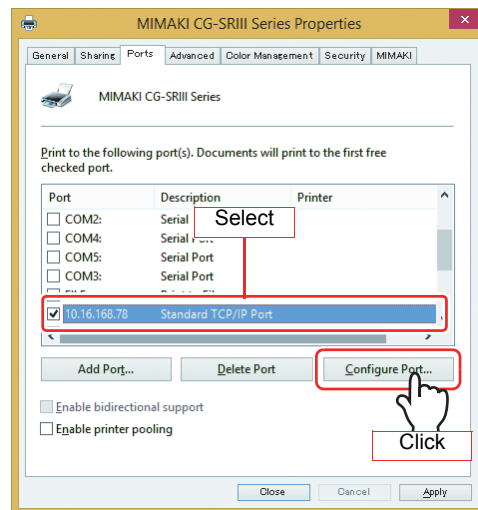
Click

9 Click [Close].



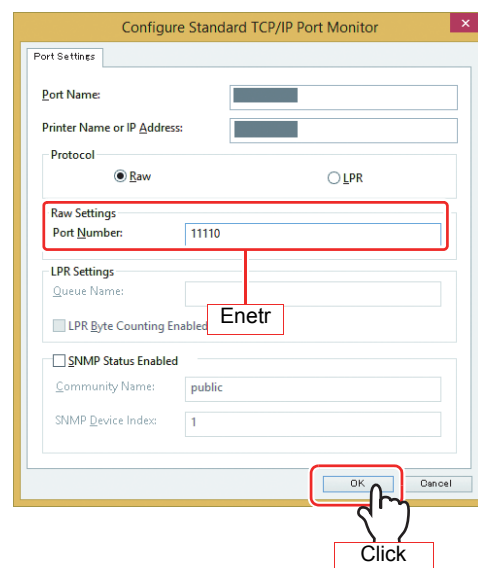
Click

10 Select the created "Standard TCP / IP Port".



11 Click [Configure Port...].

12 Enter "11110" to "Port Number" and then click [OK].



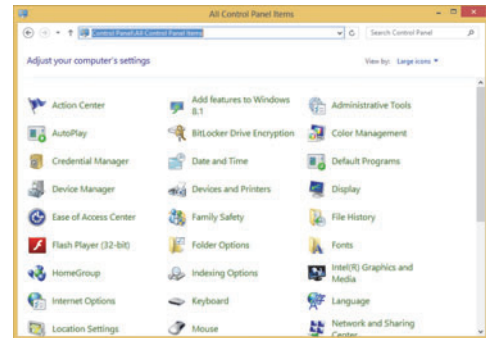
13 Click [Apply].

■ Connecting same model multiple plotters

1 Open “Devices and Printers” from control panel.

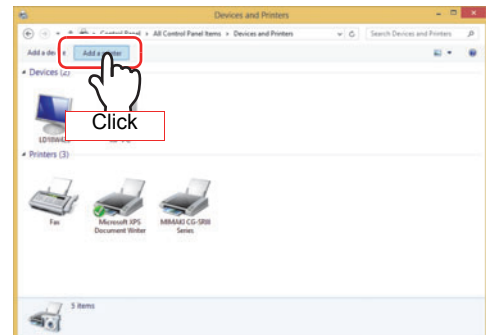


- The name for “Device and Printers” varies depending on the OS.
Windows XP: Printer and Faxes
Windows 7/8: Device and Printers

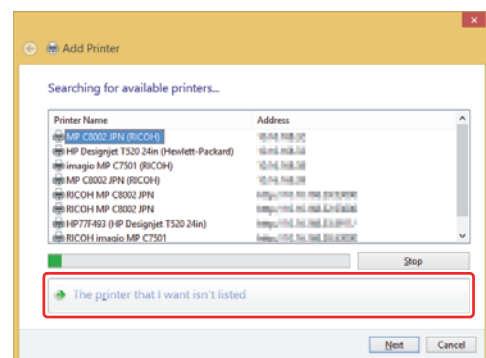


2 Click “Add a printer”.

- Add Printer Wizard opens.



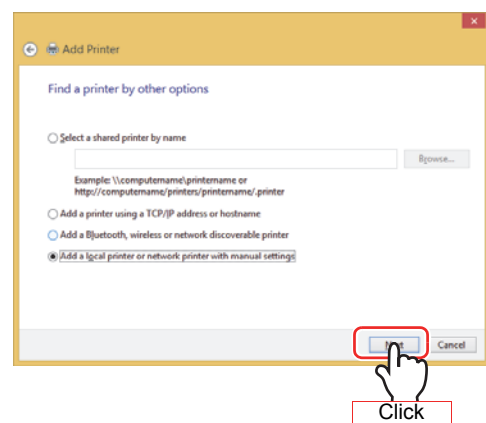
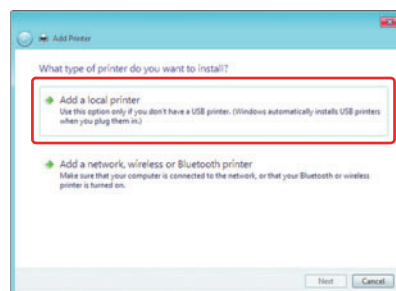
3 Click “The printer that I want isn’t listed”. (Only for Windows 8/8.1)



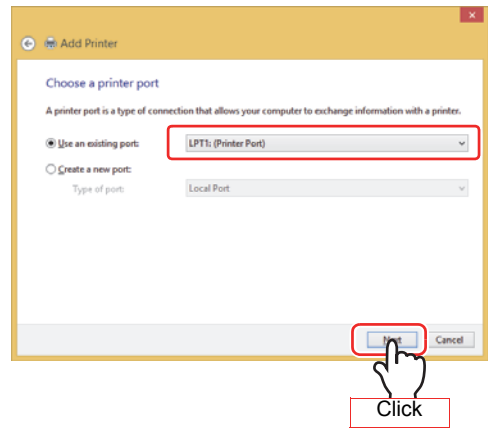
4 Select “Add a local printer or network printer with manual settings”, and click **Next**. (For Windows 8/8.1)



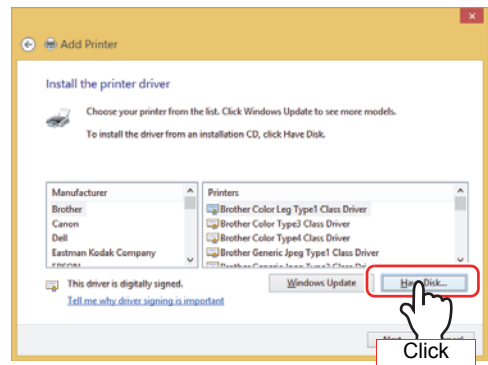
- For Windows XP/7, select “Add a local printer”.



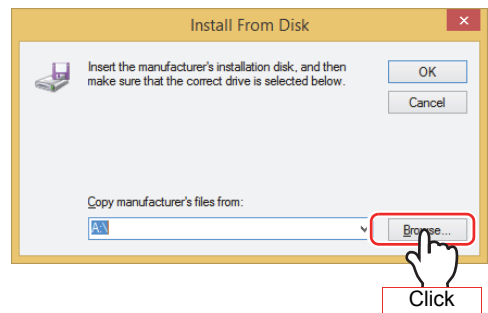
5 Select the printer port, and click **Next**.



6 Click **Have Disk...**.



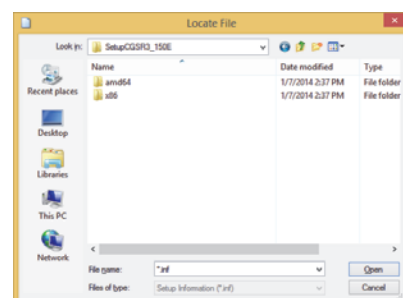
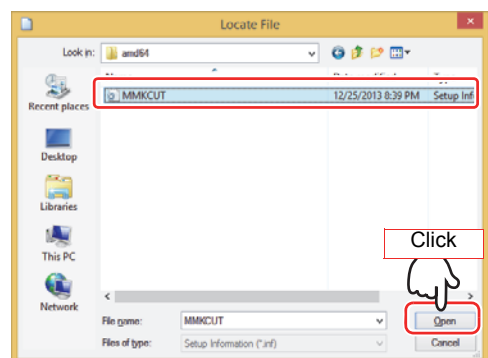
7 Click **Browse...**.



8 In the folder you opened during installation (P.6), select [MMK-CUT.inf], and click **Open**.

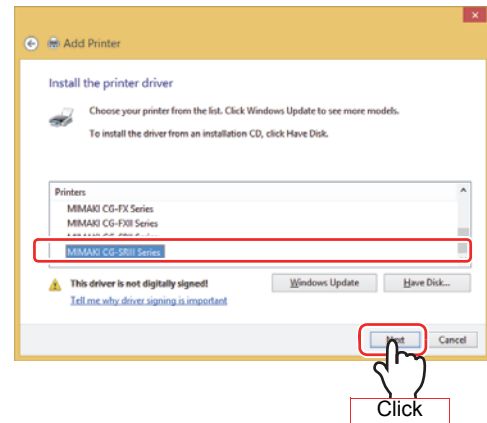


- If you're using Windows 7/8
For the 32-bit version, use the [MMKCUT.inf] in the "x86" folder.
For the 64-bit version, use the [MMKCUT.inf] in the "amd64" folder.

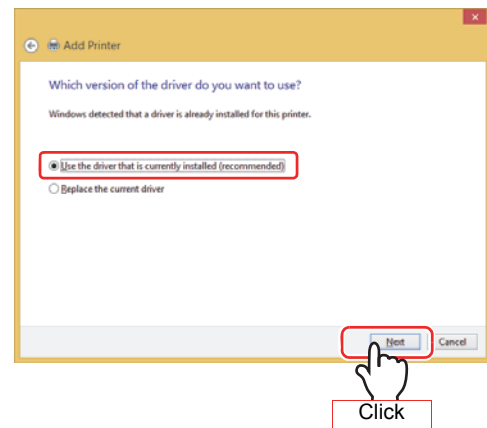


9 Click **OK**.

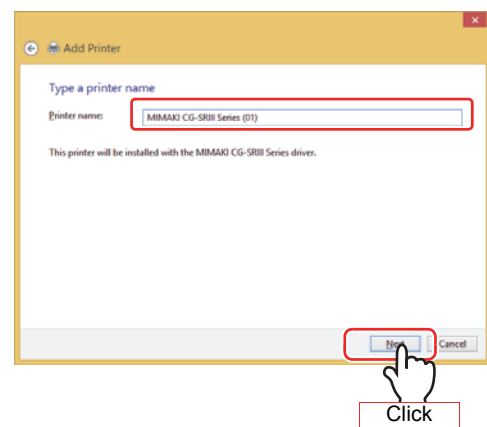
10 Select the printer to install, and click **Next**.



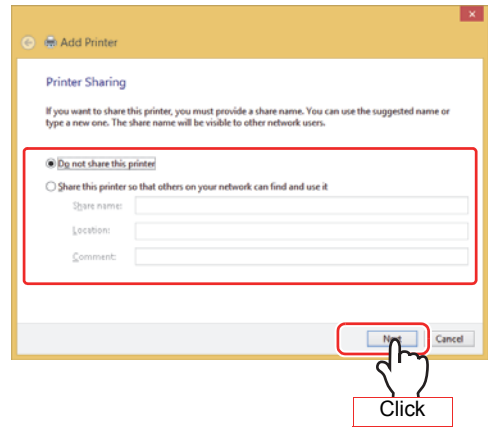
11 Select “Use the driver that is currently installed(recommended)”, and click **Next**.



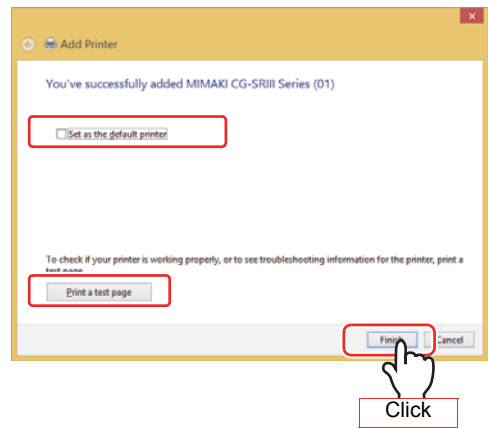
12 Supply a printer name, and click **Next**.



13 Select the “Printer Sharing”, and click **Next**.



14 Setup the “Set as the default printer” and “Print a test page”, and click **Next**.



- You can check the added printer in “Devices and Printers”.
- The name for “Device and Printers” varies depending on the OS.
Windows XP: Printer and Faxes
Windows 7/8: Device and Printers

